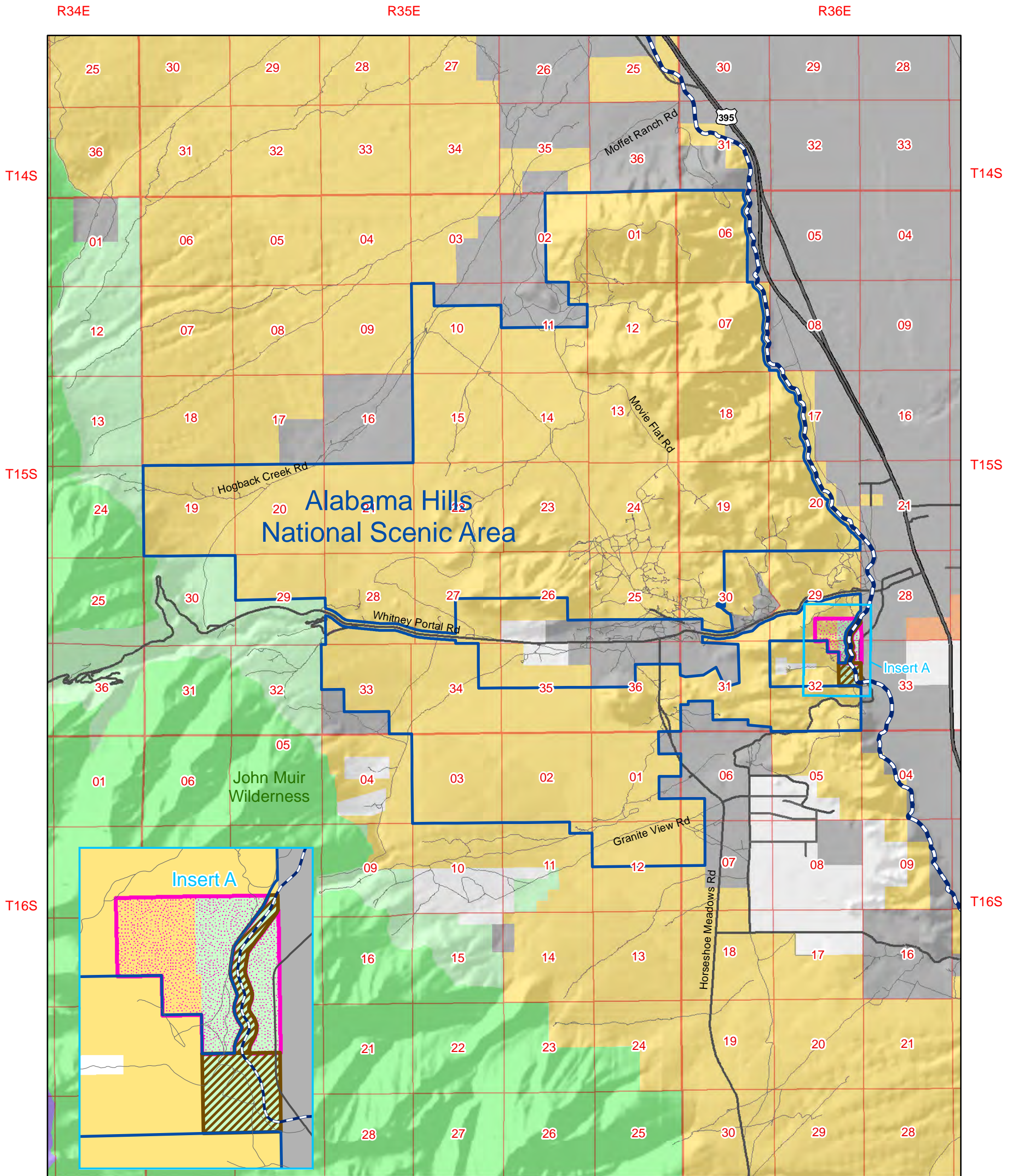


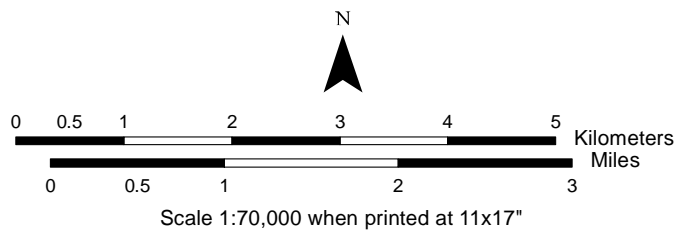
Proposed Alabama Hills National Scenic Area

September 8, 2014

This map prepared at the request of Senator Dianne Feinstein



- R34E R35E R36E
- National Scenic Area
 - Lone Pine Paiute-Shoshone Reservation Addition
 - USFS Transfer to BLM
 - Highway
 - Paved Road
 - Unpaved Road
 - Aqueduct
- Land Status**
- Bureau of Land Management
 - US Forest Service
 - County/City/Regional (LADWP)
 - Private
 - US Forest Service Wilderness



No warranty is made by the Bureau of Land Management (BLM).
The accuracy, reliability, or completeness of these data for individual use or aggregate use with other data is not guaranteed.

